



FUNCTIONAL SOLUTIONS FOR STRUCTURES



## WATER BLOCK / Polyurethane Based 1K Water Insulation Material



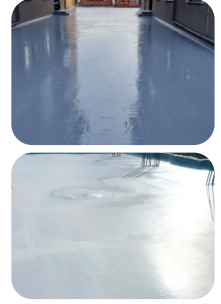
DryFiX WATER BLOCK is a single component, polyurethane based liquid material. Easy to apply. It is a high performance waterproofing product that offers long-lasting solutions. It adheres strongly to all types of surfaces and forms a 600% elastic film.



**CONSUMPTION** First layer: 0.75-0.9 kg/m<sup>2</sup> - Second layer: 0.75-0.9 kg/m<sup>2</sup>  
Minimum total consumption: 1.5-1.8 kg/m<sup>2</sup>

**COLOR** Grey

**PACKAGING** 5 kg and 25 kg



## POLYMER 100 / Ms Polymer Based Waterproofing



DryFiX POLYMER 100 is a superior waterproofing product based on MS Polymer, developed with hybrid technology, with high elasticity. It has a hard elastic structure, is UV resistant and waterproof. It is a new generation waterproofing product with a wide range of uses that can be easily applied to all types of surfaces.



**CONSUMPTION** 1 kg / m<sup>2</sup>

**COLOR** White and Grey

**PACKAGING** 5 kg - 18 kg PE bucket



## GLASSY 100 / Liquid Glass



DryFiX GLASSY 100 is a two-component, transparent floor coating with UV resistance, chemical and physical resistance that can be easily applied on ceramic, marble, granite, tile, natural stone, concrete etc. It can be used for decorative purposes as well as waterproofing. It forms a transparent, elastic and seamless layer after drying.



**CONSUMPTION** 0.25-0.30 kg / m<sup>2</sup> (double layer)

**COLOR** Transparent

**PACKAGING** A Component 3.5 kg + B Component 0.5 kg (4 kg set) Metal Box

A Component 1.75 kg + B Component 0.25 kg (2 kg set) Metal Box

A Component 0.70 kg + B Component 0.10 kg (0.80 kg set) Metal Box



## SB PLUS / Polymer - Mineral Additive Water Insulation



DryFiX SB PLUS is a water-based, single-component, UV-resistant insulation material that has a high coefficient of friction, is resistant to pedestrian traffic, and provides excellent adhesion and waterproofing thanks to its acrylic polymer and special mineral added structure.



**CONSUMPTION** 1 kg / m<sup>2</sup>

**COLOR** White and Grey

**PACKAGING** 5 kg - 18 kg PE bucket



## IZOLATOR / Elastomeric Resin Based Liquid Membrane



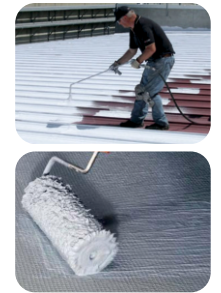
DryFiX IZOLATOR is a ready-to-use liquid, UV-resistant waterproofing product that can be easily applied to all types of surfaces and is elastic and waterproof when dry. It complies with TSEN 14891.



**CONSUMPTION** 1 kg / m<sup>2</sup>

**COLOR** White and Grey

**PACKAGING** 5 kg - 18 kg PE bucket



## BITUMER 100 / Bitumen-Rubber Based Liquid Membrane



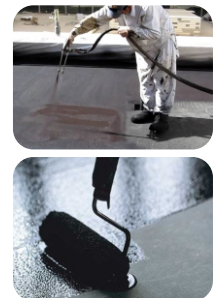
DryFiX BITUMER 100 Bitumen-rubber based liquid membrane. Provides strong adhesion to the surface it is applied to. Creates a highly elastic and durable structure against water and humidity.



**CONSUMPTION** 2.00 - 3.00 kg/m<sup>2</sup> depending on thickness

**COLOR** Black

**PACKAGING** 18 kg PE bucket





## BITUMER 100 2K / Bitumen-Rubber and Cement Based Waterproofing

DryFiX BITUMER 100 2K is a two-component, water-based flexible waterproofing material based on bitumen and cement. It provides strong adhesion to the applied surface and creates an elastic coating resistant to water and moisture. It complies with TS EN 15814.

**CONSUMPTION** 2.00 - 3.00 kg/m<sup>2</sup> depending on thickness

**COLOR** Black

**PACKAGING** A Component 22 kg + B Component 8 kg (30 kg/set) PE bucket



## SILOXANE 100 / Transparent Water Repellent Impregnation

DryFiX SILOXANE 100 is a transparent water repellent that impregnates and protects the surface very well without changing the appearance of the surface on which it is applied.

**CONSUMPTION** 200 ml/m<sup>2</sup> (100-200 ml/m<sup>2</sup> depending on surface absorbency)

**COLOR** Transparent

**PACKAGING** 3.5 Lt (Metal Box)



## FULL FLEX 2K / Cement Based Fully Elastic Waterproofing

DryFiX FULL FLEX 2K is a two-component, fully elastic insulation material consisting of a cement-based powder component (component A) and a polymer emulsion-based (component B) liquid component, applied before ceramic flooring to provide waterproofing. It complies with TSEN 14891.

**CONSUMPTION** 3 kg/m<sup>2</sup> (double layer)

**COLOR** Grey

**PACKAGING** Component A 20 kg (powder) + Component B 10 kg (liquid) (30 kg set)



## FULL FLEX 2K UV / Cement Based UV Resistant Fully Elastic Waterproofing

DryFiX FULL FLEX 2K UV Polymer emulsion modified, cement acrylic based, two component, UV resistant, fully elastic waterproofing mortar suitable for light pedestrian traffic.

**CONSUMPTION** 3 kg/m<sup>2</sup> (double layer)

**COLOR** White

**PACKAGING** A Component 20 kg (powder) + B Component 10 kg (liquid) (30 kg set)



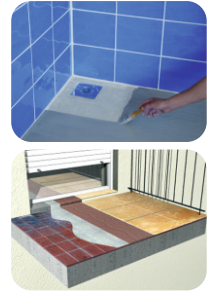
## SEMI FLEX 2K / Cement Based Semi-Elastic Waterproofing

DryFiX SEMI FLEX 2K is a cement-based, polymer-modified, two-component, ready-to-use insulation mortar. It is a two-component, semi-elastic insulation material consisting of a powder component (A component) and a polymer emulsion-based (B component) liquid component, applied before ceramic flooring to provide waterproofing.

**CONSUMPTION** 3 kg/m<sup>2</sup> (double layer)

**COLOR** Grey

**PACKAGING** Component A 20 kg (powder) + Component B 5 kg (liquid) (25 kg set)



## LATEX 100 / Adherence Enhancer and Concrete, Mortar Additive

DryFiX LATEX 100 is used to increase water impermeability, elasticity and adherence in all kinds of cement mortar, plaster, screed etc. ceramic adhesives.

**CONSUMPTION** To increase adhesion: 200 gr / m<sup>2</sup>

For mortar additives: 1-2 kg / 1 m<sup>3</sup>

**COLOR** White

**PACKAGING** 5 lt and 20 lt PE drums

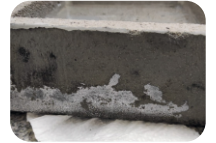




## CRYSTALLIZE / Cement Based Crystallized Waterproofing Material



DryFiX CRYSTALLIZE is a single component, crystalline waterproofing material that is cement-based, resistant to negative and positive water pressure, can be transferred to the capillary gaps of cement-based surfaces and provides waterproofing by the volume gain of the crystals.



**CONSUMPTION** 2.00 – 2.50 Kg/m<sup>2</sup> - for 2 mm application

**COLOR** Grey

**PACKAGING** 25 kg Kraft Bag

## CRYSTAL-X / Liquid Crystalline Water Insulation Additive



DryFiX CRYSTAL-X is a concrete and mortar additive that prevents the advancement of water by creating crystals in the concrete in which it is used, through capillary effect.



**CONSUMPTION** It is used at a rate of 2% of the cement ratio.

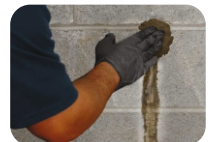
**COLOR** Transparent

**PACKAGING** 30 lt PE drum

## SHOCK / Cement Based, Fast Setting, Water Plug Mortar



DryFiX SHOCK Cement based, very fast setting, water plugging mortar used in active water leaks and repairs.



**CONSUMPTION** Varies depending on crack size.

**COLOR** Gray

**PACKAGING** 5 kg Plastic Bucket

## POLIUREA CO / Cold Polyurea Based Waterproofing Material



DryFiX POLIUREA CO is a two-component, polyurea-based liquid material. Easy to apply. It is an economical waterproofing system that offers simple solutions. It adheres strongly to all types of surfaces and forms a highly elastic film.



**CONSUMPTION** First layer: 0.75-0.9 kg/m<sup>2</sup> - Second layer: 0.75-0.9 kg/m<sup>2</sup>

Minimum total consumption: 1.5-1.8 kg/m<sup>2</sup>

**COLOR** White and Grey

**PACKAGING** 25 kg + 1.5 kg / set

## POLIUREA PR / Pure Aromatic Polyurea Based Waterproofing Material



DryFiX POLIUREA PR is a two-component, 100% solid, pure aromatic polyurea-based waterproofing membrane that can be applied only by machine in all weather conditions as it cures very quickly.



**CONSUMPTION** 1.00 kg/m<sup>2</sup> for 1 mm thickness

**SHELF LIFE** 12 months

**PACKAGING** 220kg + 200kg / set

## POLIUREA HB / Hybrid Polyurea Based Waterproofing Material



Dryfix POLIUREA HB is a solvent-free, 2-component, very fast curing, modified polyurea waterproofing system. It is economical compared to pure polyurea. It can be applied to metal, concrete, wood and other surfaces. Its fast gelation feature allows use even at temperatures of -30°C.



**CONSUMPTION** 1.00 kg/m<sup>2</sup> for 1 mm thickness

**SHELF LIFE** 12 months

**PACKAGING** 220kg + 200kg / set



## BITUMER 400 2K / Bitumen Polyurethane Based 2K Water Insulation Material



DryFiX BITUMER 400 2K is a fast curing, two-component, bitumen-enriched polyurethane-based liquid material. It forms a highly elastic film by adhering strongly to almost all types of surfaces. Its chemical and mechanical resistance is excellent. It is applied with a brush, roller, spatula or airless spraying machine, with a minimum consumption of 1.5 kg/m<sup>2</sup>.



**CONSUMPTION** Minimum total consumption: 1.5 kg/m<sup>2</sup> (double layer)

**COLOR** Black

**PACKAGING** 20+20 kg / set

## BPU SEAL 2K / Expansion Joint Filling Mastic



DryFiX BPU SEAL 2K is a two-component, polyurethane-based, cold-applied, highly elastic, self-leveling dilatation and joint filling putty with high mechanical and chemical resistance.



**CONSUMPTION** Minimum total consumption: 1.1 kg/m<sup>2</sup>

**COLOR** Grey

**PACKAGING** 8+4 kg/set

## DF PUR INJEKTION 2K / Polyurethane Based Injection Resin



DryFiX DF PUR INJEKTION 2K is a single component, solvent-free, polyurethane injection resin that reacts in contact with water.



**SHELF LIFE** 12 months

**PACKAGING** 25+2.5 kg/set

**STORAGE CONDITIONS** Store in a dry and cool environment, in its original packaging, unopened.

## DF PUR WT 2K / Polyurethane Based Water Tank Insulation



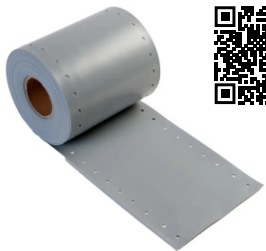
DF Pur WT 2K is a two-component, polyurethane-based, solvent-free liquid waterproofing material designed for the protection and waterproofing of drinking water tanks.



**COLOR** Blue

**PACKAGING** 20 kg + 4 kg metal bucket

**CONSUMPTION** Total consumption (minimum): 1.30-1.50 kg/m<sup>2</sup>



### DILATATION BAND

It is a thermoplastic elastomer based, UV resistant expansion tape used in the sealing and insulation of wall and floor joints and all kinds of building expansion joints.

**COLOR** Grey

**WIDTH** 15-20-25-30 cm

**LENGTH** 25 mt. roll

**THICKNESS** 1.00-1.5-2.00 mm



### CHAMBER BAND (With Mesh and Felt)

It is an elastic, joint and bevel tape based on thermoplastic elastomer, with edges reinforced with polyester, used in the waterproofing of structural joints.

**WIDTH** 120 mm

**THICKNESS** 0.60 mm

**PACKAGING** 50 mt./roll

**CHEMICAL STRUCTURE** TPE

(Thermoplastic Elastomer) & Polyester mesh



### PVC WATERPROOFING TAPE

PVC waterstop tape is a material used to ensure water tightness and prevent damage to the structure in expansion and contraction joints in reinforced concrete structures and in construction joints formed between concrete poured at different times.

**TAPE TYPES**

A	O	OL
B	I	V
M	DO	DI
DT	AK	



### WATER SWELLING TAPE

Water swellable tape is a thermoplastic based swellable tape that is suitable for use in concrete joints, construction joints and cold joints and helps with water insulation.

**STORAGE AND SHELF LIFE**

Store in original packaging in a closed, dry and clean environment. Shelf life is 24 months.

**PACKAGING** 5 x 20 mm wide 20 mt./roll  
10 x 20 mm wide 10 mt./roll

**CHEMICAL STRUCTURE** TPE (Thermoplastic Elastomer)

**INFLATION CAPACITY** >800

## THERMAL 100 / Thermal Insulation Coating



DryFiX THERMAL 100 Developed as a result of long R&D studies and entering the construction sector of our country from the USA with know-how, DryFiX THERMAL 100 is a new generation heat insulation product with its environmentally friendly formulation and high performance. Highly UV resistant DryFiX THERMAL 100, which you can safely use on interior walls as well as exterior facades of buildings, aims to insulate all centers of your home where heat loss occurs. Radiant heat reflectance value is 89%.

**CONSUMPTION** 1 lt/m<sup>2</sup> (for 1 mm thickness)

**COLOR** Standard white (Can be produced in desired colors.)

**PACKAGING** 18 lt PE bucket



## PAINTER FLEX / Ultra Flexible Exterior Cladding



DryFiX PAINTER FLEX is a water-based pure acrylic resin based, highly flexible, breathable, decorative, waterproof exterior coating.

**CONSUMPTION** 0.50 - 0.60 kg/m<sup>2</sup> (two coat application)

**COLOR** Standard white (Can be produced in desired colors.)

**PACKAGING** 18 kg PE bucket



## NM-S 10 / Moisture and Dampness Paint



DryFiX NM-S 10 Liquid moisture barrier; is a new generation moisture paint produced by modifying special chemicals with polymers, creating a layer against moisture and humidity. It provides a definitive solution against moisture and humidity formation by being applied to all kinds of wet and humid interior and exterior walls and ceilings. It is user-friendly with its new odorless formulation.

**CONSUMPTION** 500 gr/m<sup>2</sup> (two coat application)

**COLOR** White

**PACKAGING** 1 kg - 5 kg Metal Box



## POOL 100 / Pool Paint



DryFiX POOL 100 Pool Paint; It is a specially developed colored pool paint with a two-component structure, unaffected by water and water pressure, and highly resistant to UV and abrasion.

**CONSUMPTION** Average 15 m<sup>2</sup>/set Double Layer

**COLOR** Blue

**PACKAGING** A Component 4 kg + B Component 0.50 kg (4.5 kg set) Metal Box



## NO FIRE PAINT / Fireproof Paint



DryFiX NO-FIRE PAINT Flame retardant and non-flammable paint; It creates a fire-resistant layer thanks to the special resin and additives it contains. It was developed to protect structures from fire. It extends the escape / evacuation time during fire.

**CONSUMPTION** Average 1 kg / m<sup>2</sup>

(Varies according to fire resistance period and thickness in the specification)

**COLOR** Standard white (can be produced in desired colors)

**PACKAGING** 18 kg PE bucket





## NO FIRE PAINT PLUS / Intumescent Fireproof Paint



DryFiX NO FIRE PAINT PLUS is a single component, water-based, air-drying, flame-intumescent coating optimized for fire. It resists fire for 120 minutes. It delays the spread of heat generated in the environment to other compartments or rooms and the heating of the surface to which it is applied in order to protect structural steel from fire. It is applied on open profile beams, columns, cellular beams and hollow section beams. It is suitable for all structural heavy steel types and light prefabricated steel types.



**CONSUMPTION** Determined according to the required durability period in the project.

**COLOR** Standard White (can be produced in desired colors)

**PACKAGING** 18 kg PE bucket

## CABLE PAINT / Fireproof, Intumescent Cable Paint



DryFiX Cable Paint Cable paint was developed to prevent damage to electrical and communication cables during a fire and to ensure that the current passing through the cable continues without interruption. It has an intumescent feature. When exposed to flame during a fire, it swells and expands in volume, thus delaying the heat of the fire reaching the back surface (cable). It is a member of passive fire protection systems.



**CONSUMPTION** Average 1.2 mm (2 kg/m<sup>2</sup>) for 60 min resistance

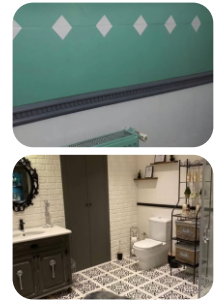
**COLOR** Standard white (can be produced in desired colors)

**PACKAGING** 18 kg PE bucket

## FAIENCE PAINT / Fayans Boyası VERSION 2.0



DryFiX Faience Paint VERSION 2.0 (Tile Paint 2.0) It is a UV-resistant, chemically and physically resistant, two-component, colored coating that can be easily applied on tiles-ceramic, marble, granite, tiles, natural stone, concrete, etc. It can be used for waterproofing purposes as well as being decorative. It forms a hard, elastic and seamless layer after drying. It allows renewal of tiles and ceramics without incurring great expenses.



**CONSUMPTION** 1 kg can paint an average of 4-5 m<sup>2</sup> of surface in two coats.

**COLOR** Can be selected from Faience Paint VERSION 2.0 color chart.

**PACKAGING** 1 kg/set (B components are under the cover).

## MULTI-X / Transformation Paint



DryFiX MULTI-X is a water-based, multi-purpose conversion paint that provides excellent adhesion to a variety of surfaces including metal, wood, plastic and concrete.



**CONSUMPTION** 1 kg can paint 10-12 m<sup>2</sup> area in two coats.

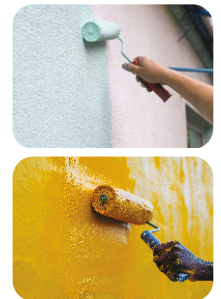
**COLOR** Can be selected from color chart.

**PACKAGING** 1 kg

## FRONT-EX / Silicone Exterior Paint



DryFiX FRONT-EX is an acrylic emulsion based exterior paint modified with special silicones, self-cleaning with rainwater, highly water repellent and resistant to sunlight.



**CONSUMPTION** 1 lt with 7-10 m<sup>2</sup> (single layer)

**COLOR** Can be produced in desired colors

**PACKAGING** 15 lt

## FRONT-ECO / Acrylic Exterior Paint



DryFiX FRONT-ECO Acrylic emulsion based It has excellent adhesion, spreading, covering and application ease due to its special structure. Its breathability feature allows the moisture on the wall to be removed.



**CONSUMPTION** 1 lt with 6-8 m<sup>2</sup> (single layer)

**COLOR** Can be produced in desired colors

**PACKAGING** 20 kg



## ANTI SLIP SOLUTION / Non-Slip Solution



DryFiX ANTI SLIP SOLUTION It is produced as a transparent solution that provides non-slip properties on shiny and slippery surfaces and increases the friction coefficient of the surface. It provides non-slip properties by penetrating into the ground without changing the appearance of the applied surface. It provides non-slip performance in both wet and dry conditions when applied on ceramic-tiles. **ATTENTION! It should be rinsed with water from the surface after application.**

**CONSUMPTION** 100-150 gr/m2

**COLOR** Transparent

**PACKAGING** 0.5 lt - 1 lt - 5 lt and 10 lt PE Drum



## CLEANER / Surface Cleaner



DryFiX CLEANER is a high-performance remover that cleans mortar and joint residues on ceramic, tile, and tiled surfaces. It is used on metal surfaces to clean residues such as oil and dirt on the surface during preparation of metals for painting.

**CONSUMPTION** Varies depending on the applied surface

**COLOR** Transparent

**PACKAGING** 1 lt, 5 lt Pe Drum



## NO-FIRE / Fire Solution



DryFiX NO-FIRE is a fireproofing solution that prevents the surface from catching fire and glowing by completely cutting off the contact of the surface with oxygen with its special mineral added structure. It can be applied to absorbent surfaces such as paper, fabric, wood.

**CONSUMPTION** 150-250 gr/ m2 (Varies depending on application and surface absorbency)

**COLOR** Transparent

**PACKAGING** 5 lt PE Drum



## DFPUR-355 / Polyurethane Thinner



DryFiX DFPUR-355 is used for thinning polyurethane products and/or cleaning equipment.

**DENSITY** 0.83-0.87 g/ml

**COLOR** Colorless

**PACKAGING** 15 LT



## PRIM-A / Bitumen Primer

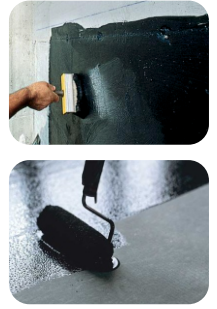


DryFiX PRIM-A is a bitumen emulsion primer. It is used as a primer in all bituminous coating applications, as a primer and binder in fiberglass, canvas etc. applications, as an impermeability and adhesion enhancing additive in mortars and plasters formed with cement and/or fine sand, to prevent construction molds from stretching and deteriorating due to water and as a mold release agent.

**CONSUMPTION** 150-200 gr/m<sup>2</sup> (single layer application)

**COLOR** Brown

**PACKAGING** 15 kg PE bucket



## PRIMER 100 / Exposed Concrete Primer

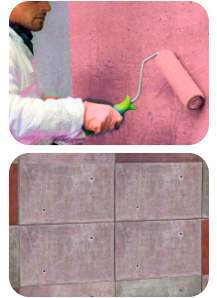


DryFiX PRIMER 100 Exposed concrete primer; is a polymer dispersion based, special mineral added exposed concrete primer. It should be diluted with a maximum of 30% water. It should be stirred frequently during use, the sand should be prevented from settling at the bottom and it should be applied by ensuring that the sand is evenly distributed on the surface.

**CONSUMPTION** 150-250 gr/m<sup>2</sup>

**COLOR** Pink

**PACKAGING** 12 kg PE bucket



## ADERANS / Ceramic Primer on Ceramic



Dryfix ADHERENCE; is a polymer-based, ready-to-use primer that provides high adherence, developed for new ceramic applications on ceramic surfaces. Thanks to its special formula, it provides excellent adhesion on low-absorption surfaces and prevents ceramics from falling.

**ATTENTION:** Minimum C2TE class ceramic adhesive must be used on it.

**CONSUMPTION** 100-200 gr/m<sup>2</sup>

**COLOR** Transparent pink

**PACKAGING** 5 kg PE Bucket



## THERMAL PRIMER / Thermal Insulation Coating Primer



DryFiX THERMAL PRIMER is a Thermal 100 Thermal Insulation Coating primer. It is a ready-to-use liquid emulsion produced to increase the thermal efficiency and adherence of the applied surface.

**CONSUMPTION** 150-250 gr/m<sup>2</sup>

**COLOR** Light blue

**PACKAGING** 18 kg PE bucket



## START-UP / Exterior Primer

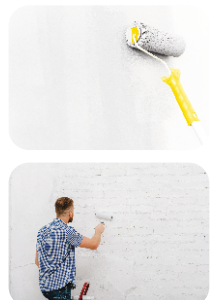


DryFiX START-UP is a white, covering primer based on acrylic emulsion that can be used on exterior and interior surfaces. It is used as a primer on concrete, plaster and similar raw walls before the final coat of paint is applied.

**CONSUMPTION** 10-12m<sup>2</sup> with 1 lt (single layer)

**COLOR** White

**PACKAGING** 20 kg



## DFC-100 / Solvent-free Epoxy Primer



DryFiX DFC-100 Two-component, solvent-free, epoxy resin-based, multi-purpose epoxy primer. It is used in saturating concrete surfaces, cementitious mortars and screeds, as a transition primer before re-coating floors coated with epoxy or polyurethane, as a primer before polyurea application, and for saturating unpainted wooden surfaces that do not require UV resistance.



**CONSUMPTION** Depending on the porosity of the surface 350-500 gr/m<sup>2</sup>

**COLOR** Transparent

**PACKAGING** A Component 3 kg + B Component 1.5 kg (4.5 kg set) Metal Box  
A Component 12 kg + B Component 6 kg (18 kg set) Metal Box

## DFP-600 / Anticorrosive Epoxy Primer



DryFiX DFP-600 is a two-component, anticorrosive, zinc phosphate-containing surface-tolerant epoxy primer cured with polyamide hardener. It is used as a surface-tolerant epoxy primer on metal surfaces where sanding or sanding cannot be done, where thin rust cannot be removed, and where only mechanical cleaning can be done. It is suitable for use on working decks, hatch covers, piers and bridge legs, and industrial facility steels.



**CONSUMPTION** 150 gr/m<sup>2</sup> (Single layer application)

**COLOR** Grey

**PACKAGING** A Component 17.5 kg + B Component 2.5 kg (20 kg set) Metal Box

## DF PUR PRIMER 1K / 1K Polyurethane Resin Based Primer



DryFiX DF PUR PRIMER 1K Polyurethane based single component, low viscosity primer. Perfectly covers and impregnates the surface holistically and homogeneously. Even if the main layer is delayed, it does not cause a problem. It is elastic. It offers a low cost solution for concrete sealing and protection.



**CONSUMPTION** Depending on the porosity of the lower layer,

it is applied with a brush or roller with a consumption of 100-200gr/m<sup>2</sup>.

**COLOR** Transparent Yellow

**PACKAGING** 1 Lt, 5 Lt, 20 Lt.

## DF PUR PRIMER 2K / 2K Polyurethane Resin Based Primer



DryFiX DF PUR PRIMER 2K Two-component, polyurethane primer. Low viscosity and easy to use. Hydrophobic and highly resistant to hydrolysis. Polyurethane-based primer that can be used for all general-purpose concrete surfaces. Effectively resistant to chemicals.



**CONSUMPTION** It is a two-component product and depending on the ground and surface conditions, it is 200-300 gr/m<sup>2</sup>

**COLOR** Red and Grey

**PACKAGING** 15+5 kg and 3+1 kg metal packaging



## ANTI-SLIP PAINT / Non-Slip Paint

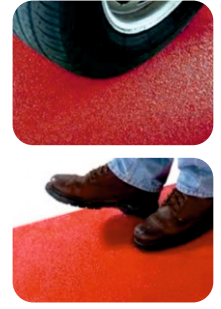


DryFiX ANTI-SLIP PAINT Anti-slip floor paint; It is a new generation floor paint with a high coefficient of friction and special mineral additives, developed for surfaces with slippery problems.

**CONSUMPTION** 8-10 m2/set (two coat application)

**COLOR** Standard white (Can be produced in desired colors.)

**PACKAGING** A Component: 4.2 kg, B Component: 0.5 kg, C Component: 1.3 kg (6kg/set) Metal Box



## İSG 6331 / Non-Slip Varnish



Dryfix İSG 6331 Non-Slip Varnish is a two-component, chemically cured, transparent coating applied to slippery surfaces, which increases the friction coefficient of the surface thanks to the transparent granules it contains and provides non-slip properties. It creates a durable and non-slip film layer.

**CONSUMPTION** 250-300 gr/m2 (two coat application)

**COLOR** Transparent

**PACKAGING** A Component 3.5 kg + B Component 0.5 kg (4 kg set) Metal Box

A Component 0.70 kg + B Component 0.10 kg (0.80 kg set) Metal Box



## TRAFFIC PAINT / Floor Paint



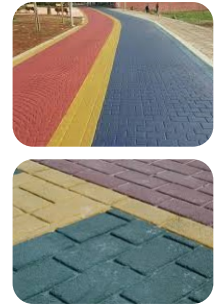
DryFiX TRAFFIC PAINT Floor Paint is a single component, air curing, decorative and protective product. In addition to being a product that can be applied indoors and outdoors, it creates a floor covering that is resistant to UV rays, water and heavy traffic.

**CONSUMPTION** Average 350 - 400 gr/m2 in two coats.

An 18 kg package can paint an average of 45-50 m2 surface in two coats.

**COLOR** Ral Chart Colors and A base, C base

**PACKAGING** 5kg - 18 kg Metal Bucket



## DF PUR 150 / Aliphatic PU Paint



DryFiX PUR 150 Two-component, aliphatic polyurethane-based protective semi-matte paint.

**CONSUMPTION** 0.100-0.150 kg / m2

**COLOR** Ral Chart Colors and A base, C base

**PACKAGING** 20 kg/set



## BETOLAC / Concrete Polish

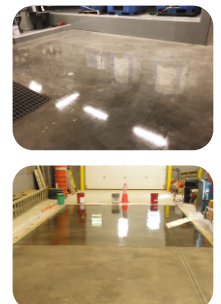


DryFiX BETOLAC Single component, UV resistant, transparent, aliphatic polyurethane based protector that gives the concrete a wet appearance, provides dust-proofing, high mechanical strength, water and stain resistance on the surface (Silane-Siloxane modified). It can be applied up to 3 layers depending on the concrete structure.

**CONSUMPTION** 200 gr – 300 gr / m<sup>2</sup> (two coat application)

**COLOR** Transparent

**PACKAGING** 4 kg and 15 kg Metal Bucket



## DFC-300 / Self Leveling Epoxy Coating



DryFiX DFC 300 is a solvent-free, self-leveling, epoxy-based floor coating material with high mechanical strength and chemical resistance.



**CONSUMPTION** 1.2 - 1.5 kg/m<sup>2</sup>

**COLOR** Ral Chart Colors

**PACKAGING** 19 kg + 5 kg / Set

## DFC 301 / Epoxy Intermediate Coating



DryFiX DFC 301 is an intermediate layer coating used in factories, assembly workshops, warehouses, aircraft hangars, stores, car parks, food facilities, water tanks, hospitals, chemical and pharmaceutical industries, power plants, units requiring hygiene, and all industrial areas.



**CONSUMPTION** 0.6 kg/m<sup>2</sup>

**COLOR** RAL colors

**PACKAGING** 19 kg + 5 kg/set

## DFC 310 / Solvent-Free Epoxy Resin Based Top Coat Paint



DryFiX DFC 310 is a two-component, solvent-free, smooth surface finish, easy-to-apply top coat epoxy paint designed for industrial floors.



**CONSUMPTION** Minimum total consumption: 0.7-0.9 kg/m<sup>2</sup>

**COLOR** A Comp. Ral Chart Colors - B Comp. Transparent

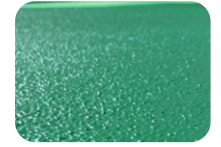
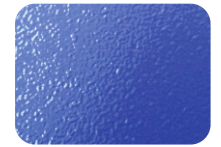
**PACKAGING** 19 kg + 5 kg / Set (Glossy)

17 kg + 3 kg / Set (Semi-Matt)

## DFC 400 / Orange Peel Look Epoxy Coating



DryFiX DFC 400 Solvent-Free Epoxy Top Coat Paint is a two-component orange peel look epoxy coating.



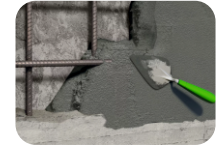
**CONSUMPTION** Minimum total consumption: 0.7-0.9 kg/m<sup>2</sup>

**COLOR** Ral Chart Colors

**PACKAGING** 19 kg + 5 kg / Set

## TRACK R4 / R4 Class Structural Repair Mortar (Thick)

DryFiX TRACK R4 Cement based, fiber reinforced, thixotropic R4 class structural repair mortar strengthened with special additives.



**CONSUMPTION** 1.9-2.0 kg/m<sup>2</sup> - 1 mm  
**COLOR** Gray  
**PACKAGING** 25 kg Kraft Bag



## TRACK R2 / R2 Class Repair Mortar (Thin)

DryFiX TRACK R2 Cement based, reinforced with polymers and special additives, R2 class repair and leveling mortar.

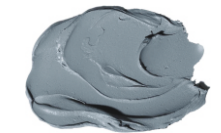


**CONSUMPTION** 1.9-2.0 kg/m<sup>2</sup> - 1 mm  
**COLOR** Gray  
**PACKAGING** 25 kg Kraft Bag



## DFR 2000 (TIX) / Thixotropic Epoxy Repair and Adhesive Mortar

DryFiX DFR 2000 (TIX) is a two-component, solvent-free, shrinkage-free, moisture-tolerant, putty-like and thixotropic epoxy repair and adhesive mortar. It is used in fixing anchor elements on vertical surfaces, bonding dilatation tapes and sprout planting.



**CONSUMPTION** Depending on the concrete surface, workmanship, dilatation band size, it is 1.00 kg/m<sup>3</sup> for two layers when requested  
**COLOR** Grey  
**PACKAGING** 3.75 kg + 1.25 kg / Set



## GROUT R4 / R4 Class Grout Mortar

DryFiX GROUT R4 Cement based, self-levelling, non-shrinking, R4 class structural grout mortar reinforced with special additives.

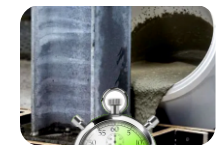


**CONSUMPTION** 2.1-2.3 kg/m<sup>2</sup> - 1 mm  
**COLOR** Gray  
**PACKAGING** 25 kg Kraft Bag



## GROUT R4 RAPID / R4 Class Fast Setting Grout Mortar

DryFiX GROUT R4 RAPID Cement based, fast setting, self-levelling, non-shrinking, R4 class structural grout mortar reinforced with special additives.



**CONSUMPTION** 2.1-2.3 kg/m<sup>2</sup> - 1 mm  
**COLOR** Gray  
**PACKAGING** 25 kg Kraft Bag

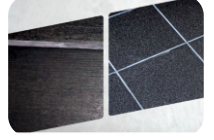




## DERZ PLUS / CG1 Class Grout



DryFiX DERZ PLUS Cement based, reinforced with special hydrophobic polymer, CG1 class, joint filler material suitable for 1-6 mm joint gaps.



**CONSUMPTION** 100 - 800 gr/m2 depending on joint width and ceramic size

**COLOR** White

**PACKAGING** 20 kg Kraft Bag

## DERZ AQUA / CG2WA Class Silicone Joint Filler



DryFiX DRILL AQUA Cement based, reinforced with special hydrophobic polymer and silicone additives, CG2WA class, joint filler material suitable for 1-12 mm joint gaps.



**CONSUMPTION** 100 - 800 gr/m2 depending on joint width and ceramic size

**COLOR** White

**PACKAGING** 20 kg Kraft Bag

## EPO DERZ / Epoxy Based Grout



DryFiX EPO JOINT is a two-component, solvent-free, epoxy resin-based joint filler and adhesive material that can be cleaned with water.



**Note** The hardener component is inside the resin packaging.

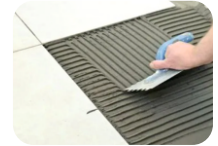
**COLOR** Ral Chart Colors

**PACKAGING** 5 kg A Component + 0.5 kg B Component



**CER 404 / C1T Class Ceramic Adhesive Mortar**

DryFiX CER 404 Cement based, reduced slippery, C1T class tile and ceramic adhesive mortar.



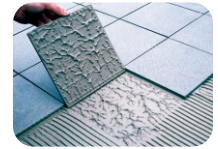
**CONSUMPTION** 4.0 - 6.0 kg/m<sup>2</sup>

**COLOR** Gray

**PACKAGING** 25 kg Kraft Bag

**CER 505 / C1TE Class Ceramic Adhesive Mortar**

DryFiX CER 505 Cement based, reduced slippery properties, reduced open waiting time, C1TE class tile and ceramic adhesive mortar.



**CONSUMPTION** 4.00 - 6.00 kg/m<sup>2</sup>

**COLOR** Grey and White

**PACKAGING** 25 kg Kraft Bag

**CER 606 / C2TE Class Ceramic Adhesive Mortar**

DryFiX CER 606 Cement based, high performance C2TE class tile and ceramic adhesive mortar with reduced slipperiness and extended open waiting time.



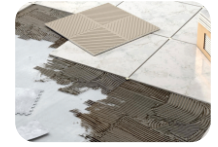
**CONSUMPTION** 4.00 - 6.00 kg/m<sup>2</sup>

**COLOR** Grey and White

**PACKAGING** 25 kg Kraft Bag

**CER 707 / C2TES1 Class Ceramic Adhesive Mortar**

DryFiX CER 707 Cement-based, high-performance and flexible C2TES1 class tile and ceramic adhesive mortar with reduced slipperiness and extended open waiting time.



**CONSUMPTION** 4.00 - 6.00 kg/m<sup>2</sup>

**COLOR** Grey and White

**PACKAGING** 25 kg Kraft Bag

**CER 808 / C2TES2 Class Ceramic Adhesive Mortar**

DryFiX CER 808 Cement based, high performance, highly elastic, C2TES2 class tile and ceramic adhesive mortar with reduced slipperiness and extended open waiting time.



**CONSUMPTION** 4.00 - 6.00 kg/m<sup>2</sup>

**COLOR** Grey and White

**PACKAGING** 25 kg Kraft Bag

## FLOOR 600 / Quartz Aggregate Surface Hardener



DryFiX FLOOR 600 Cement based, quartz aggregate surface hardener material containing special additives to increase compatibility with concrete.



**CONSUMPTION** 4.00-6.00 kg/m<sup>2</sup>

**COLOR** Grey, Red, Green

**PACKAGING** 25 kg Kraft Bag

## FLOOR 500 / Corundum Aggregate Surface Hardener



DryFiX FLOOR 500 Cement based, corundum aggregate, surface hardener material containing special additives to increase compatibility with concrete.



**CONSUMPTION** 4.00-6.00 kg/m<sup>2</sup>

**COLOR** Grey, Red, Green

**PACKAGING** 25 kg Kraft Bag

## SELF PRO / Self Leveling Screed



DryFiX SELF PRO is a cement-based, self-levelling screed that can be applied in 1-10 mm thickness, contains modified additives, and has high abrasion and pressure resistance.



**CONSUMPTION** 1.9-2.1 kg/m<sup>2</sup> - for 1 mm thickness

**COLOR** Grey

**PACKAGING** 25 kg Kraft Bag

## SELF PRO RAPID / Fast Drying Self Leveling Rapid Screed



DryFiX SELF PRO RAPID is a gypsum-based, self-levelling screed that can be applied in 1-10 mm thickness, has a fast setting, contains modified additives, and has high abrasion and pressure resistance.



**CONSUMPTION** 1.9-2.1 kg/m<sup>2</sup> - for 1 mm thickness

**COLOR** Grey

**PACKAGING** 25 kg Kraft Bag



## GAZBOND / Cement Based, Aerated Concrete Masonry Mortar



DryFiX GAZBOND is a cement-based, single component, high performance gas concrete mesh mortar. It is used as gas concrete mesh mortar in interior and exterior areas.



**CONSUMPTION** 4.00-6.00 kg/m<sup>2</sup> - with 10 mm Notched Trowel

**COLOR** Grey

**PACKAGING** 20 kg Kraft Bag

## POWERELL / Masonry Mortar



DryFiX POWERELL is a cement-based, single component, high performance masonry mortar. It does not harden quickly and provides time and ease for leveling.



**CONSUMPTION** 16-18 kg/m<sup>2</sup> - for 10 mm application

**COLOR** Grey

**PACKAGING** 25 kg Kraft Bag



## SATEN PRO / Satin Plaster



DryFiX SATIN PRO is a white cement based, polymer added, fine satin plastering material applied on rough plaster.



**CONSUMPTION** 0.90-1.10 kg/m<sup>2</sup> - for 1 mm thickness

**COLOR** White

**PACKAGING** 20 kg Kraft Bag

## PRATİK / Machine Plaster



DryFiX PRACTICAL is a cement-based plastering material that can be applied to interior and exterior surfaces by hand or machine.



**CONSUMPTION** 14-16 kg/m<sup>2</sup> - for 1 cm thickness

**COLOR** Grey

**PACKAGING** 25 kg Kraft Bag

## CLASSIC / Fine Plaster



DryFiX CLASSIC is a cement-based, fine plastering material applied on rough plaster on interior and exterior surfaces.



**CONSUMPTION** 1.4 - 1.6 kg/m<sup>2</sup> - 1 mm

**COLOR** Grey

**PACKAGING** 25 kg Kraft Bag

## MANTO PLAST / Coating Plaster



DryFiX MANTO PLAST is a cement-based, fibrous, polymer-added thermal insulation board plaster. It is suitable for rockwool-EPS-XPS insulation boards.



**CONSUMPTION** 4.00 - 6.00 kg/m<sup>2</sup> - 2 layers

**COLOR** Grey

**PACKAGING** 25 kg Kraft Bag

## MANTO 404 / Coating Adhesive



DryFiX MANTO 404 Cement based, polymer added thermal insulation board adhesive mortar. Suitable for rock wool-EPS-XPS insulation boards.





## MANTO DECO / Decorative Coating



DryFiX MANTO DECO is a cement-based, grain-textured, polymer-added decorative exterior coating.



**CONSUMPTION** 2.80-3.20 kg/m<sup>2</sup>

**COLOR** White

**PACKAGING** 25 kg Kraft Bag

## THERMAL 100 EX / Exterior Thermal Insulation Plaster



DryFiX THERMAL 100 EX is a perlite-based, ready-to-use plaster mortar that can be applied manually or by machine. It has water repellency and provides thermal insulation. It has A1 class fire resistance.



**CONSUMPTION** 13 kg: 3-3.5 m<sup>2</sup> for 1 cm thickness

20 kg: 3.5-4 m<sup>2</sup> for 1 cm thickness

**COLOR** White

**PACKAGING** 13 kg and 20 kg Kraft Bag

## EPS / Thermal Insulation Board



White	Dryfix Asmolen
	Dryfix 8-10 kg/m <sup>3</sup>
	Dryfix 10 kg/m <sup>3</sup>
	Dryfix 12 kg/m <sup>3</sup>
	Dryfix 14 kg/m <sup>3</sup>
	Dryfix 16 kg/m <sup>3</sup>
	Dryfix 18 kg/m <sup>3</sup>
Carbonaceous	Dryfix C 10 kg/m <sup>3</sup>
	Dryfix C 12 kg/m <sup>3</sup>
	Dryfix C 12-14 kg/m <sup>3</sup>
	Dryfix C 15 kg/m <sup>3</sup>
	Dryfix C 16 kg/m <sup>3</sup>

Thickness	Number in Package	Package m <sup>3</sup>
1cm	50	0,25
2cm	25	0,25
2,5 cm	20	0,25
3cm	16	0,24
4cm	12	0,24
5cm	10	0,25
6cm	8	0,24
7cm	7	0,245
8cm	6	0,24
9cm	5	0,225
10cm	5	0,25

\*Please consult for Underfloor Heating Boards.





# Dry FiX



**İZERSAN YAPI MALZEMELERİ SAN. VE TİC. LTD. ŞTİ.**

6016/6 Sokak No:19/1 Işıkkent / Bornova-İZMİR/TÜRKİYE  
Tel&Fax : +90 850 777 05 35 • E-mail:info@izersan.com.tr



[www.dryfix.com.tr](http://www.dryfix.com.tr)



[dryfixyalitimboya](https://www.instagram.com/dryfixyalitimboya)



[dryfixyalitim](https://www.facebook.com/dryfixyalitim)



[dryfixyalitimboya](https://www.youtube.com/dryfixyalitimboya)



[+90 850 777 05 35](https://wa.me/908507770535)



FLOOR  
COVERINGS



CONSTRUCTION  
CHEMICALS



NON-SLIP



FIRE



THIS



HEAT